



BIOMEDICAL



Any waste contaminated with infectious or biohazardous material

SHARPS Yellow Containers



Glass pasteur pipettes



Glass vials



Glass bottom dish



Glass slides



Glass coverslips



Broken glass (flasks, bottles)



Glass petri dish



Scalpels



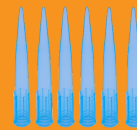
Needles with syringes



Glass ampoules



Blades



1 mL & 200 µl plastic pipette tips



Glass vacutainer tubes

NON-SHARPS Yellow Bags



Serological pipettes



Contaminated gloves



Syringes (without needles)



1.5 mL tubes



Plastic pasteur pipettes



Purification columns



Falcon tubes



6/12/24/96 well plates



10 µl pipette tips



Plastic vacutainer tubes



Cell culture flasks



Contaminated paper towels



Contaminated absorbent pads



Cryotubes



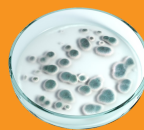
Plastic cell culture tubes



Cell scrapers



Microfuge tubes



Plastic petri dishes with bacterial/fungal cultures



Bandages or dressing containing dry blood or body fluids

